

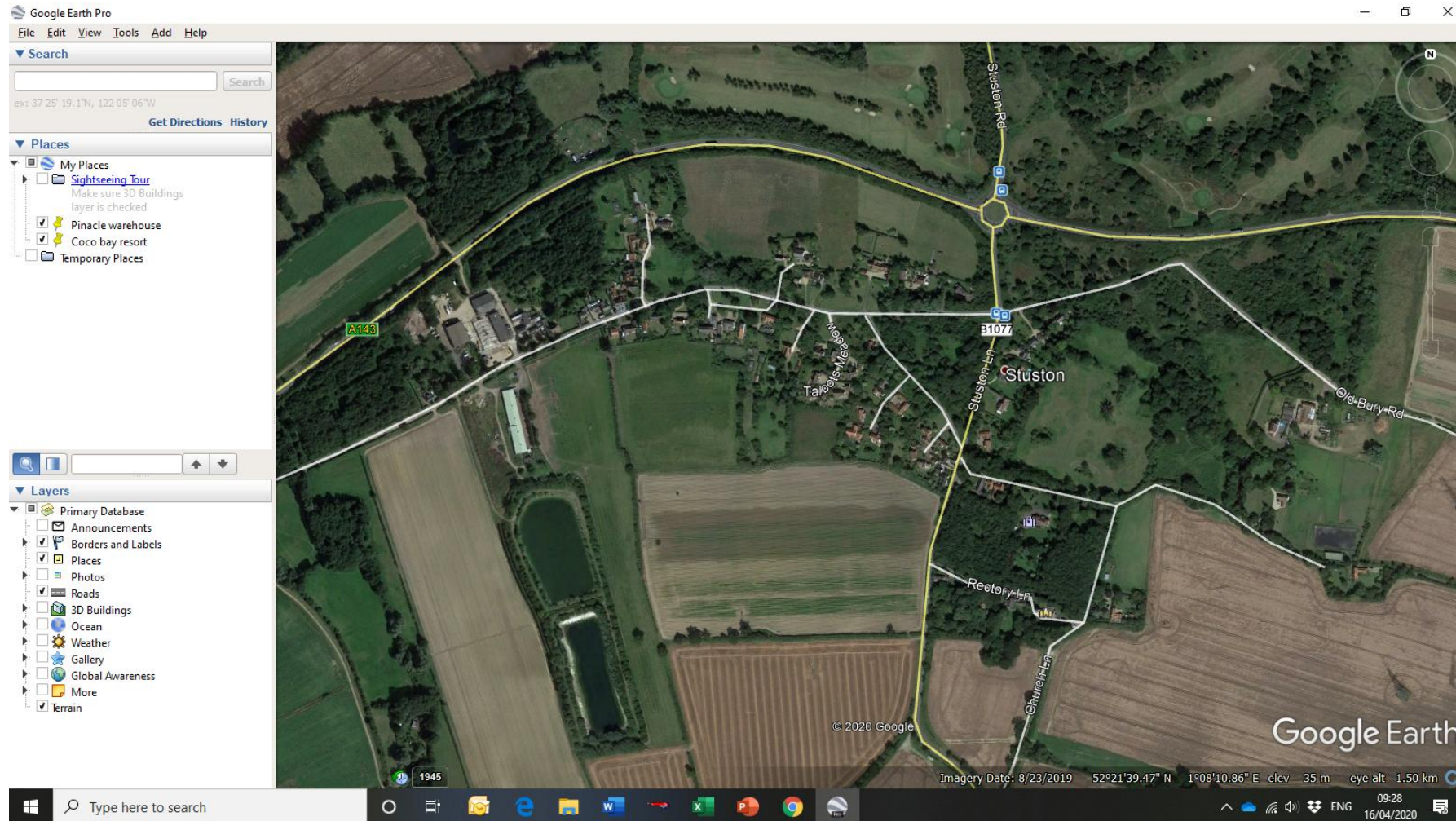
# Stuston Images

[Stuston – meaning Stut’s Farm]

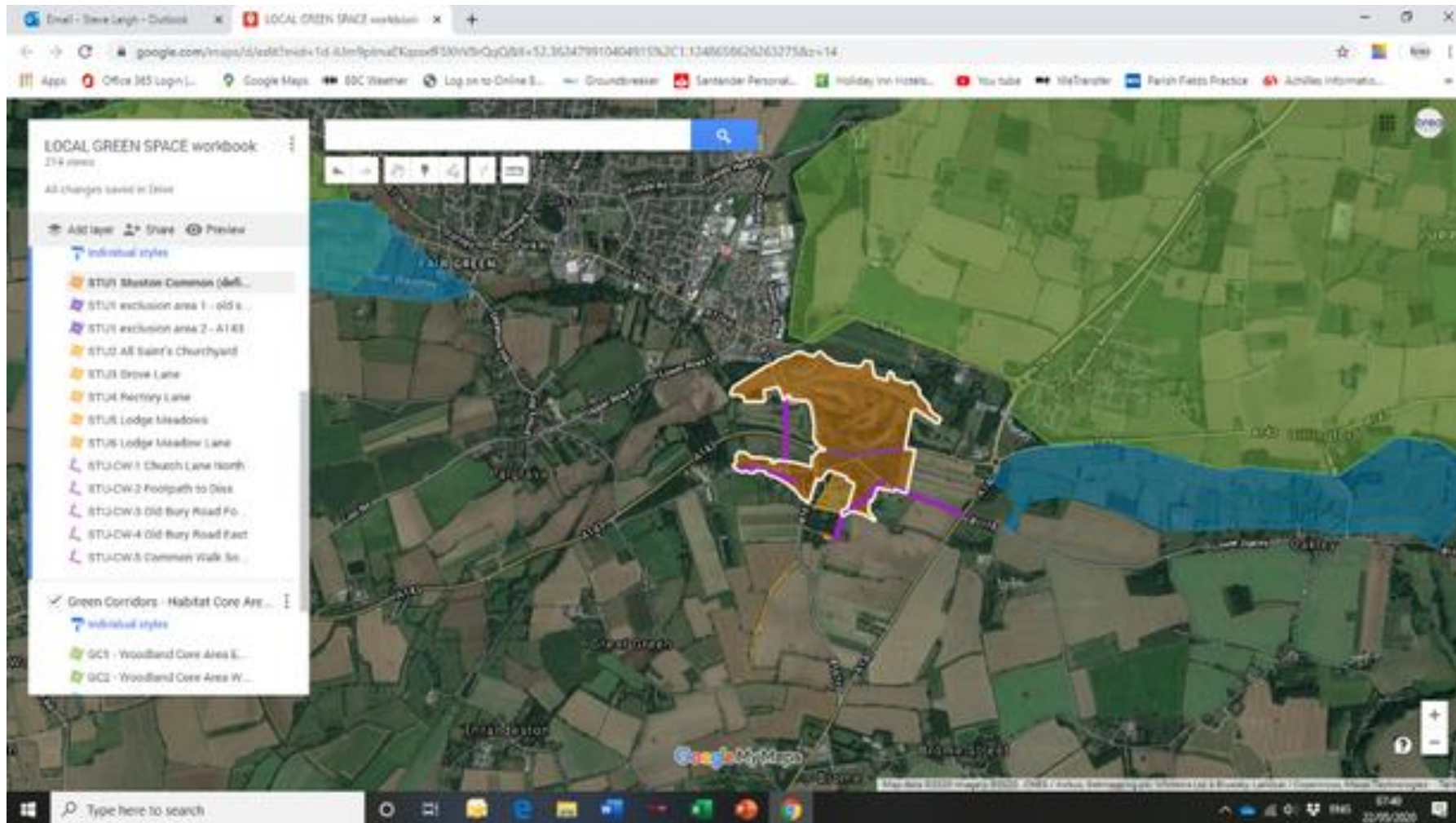
A visual record of the open spaces and thoroughfares within the village  
in summer of 2020



# Further information: Google image 2020



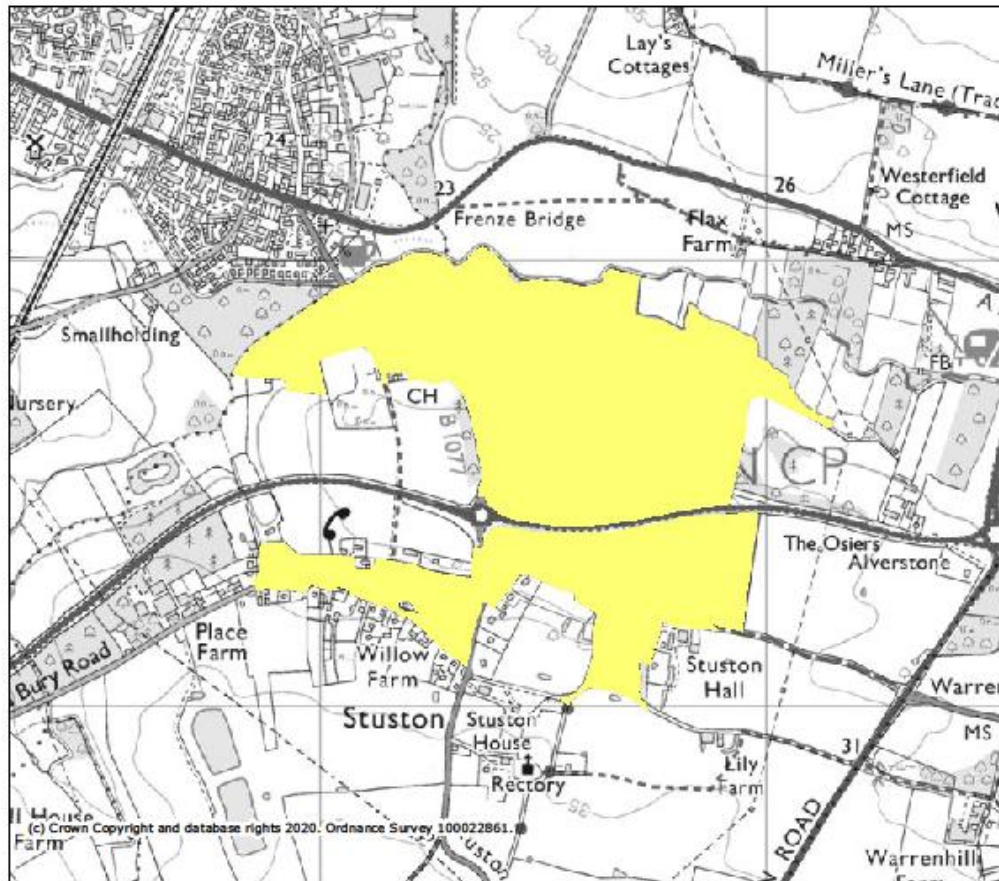
# Further information: Footpaths and Rights of Way




# Further information: Defined Common Ground

MAGiC

Stuston Village - Common Ground



## Legend

 Countryside and Rights of Way Act 2000 - Access Layer (England)

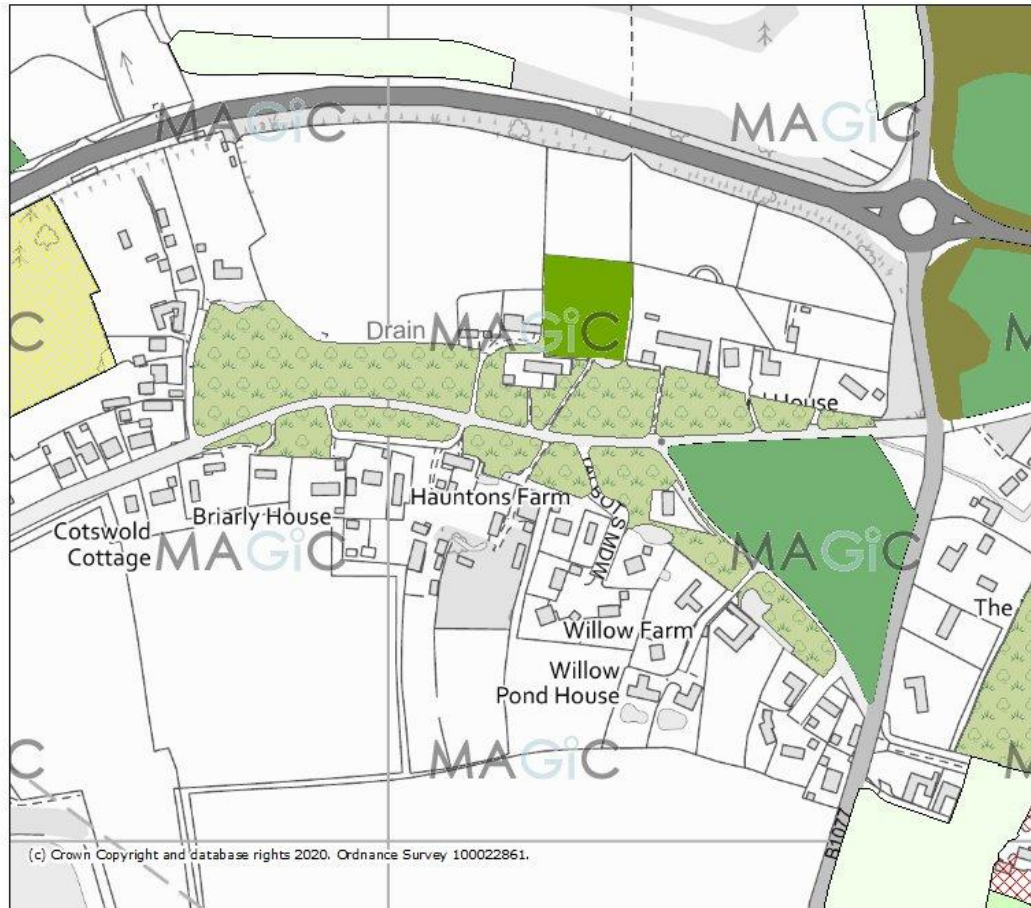
Projection = OSGB36  
xmin = 611100  
ymin = 277200  
xmax = 615700  
ymax = 280000



Map produced by MAGiC on 27 April, 2020.  
Copyright resides with the data suppliers and the map must not be reproduced without their permission. Some information in MAGiC is a snapshot of the information that is being maintained or continually updated by the originating organisation. Please refer to the metadata for details as information may be illustrative or representative rather than definitive at this stage.

# Further Information

## MAGiC Stuston Village - Habitats - small scale

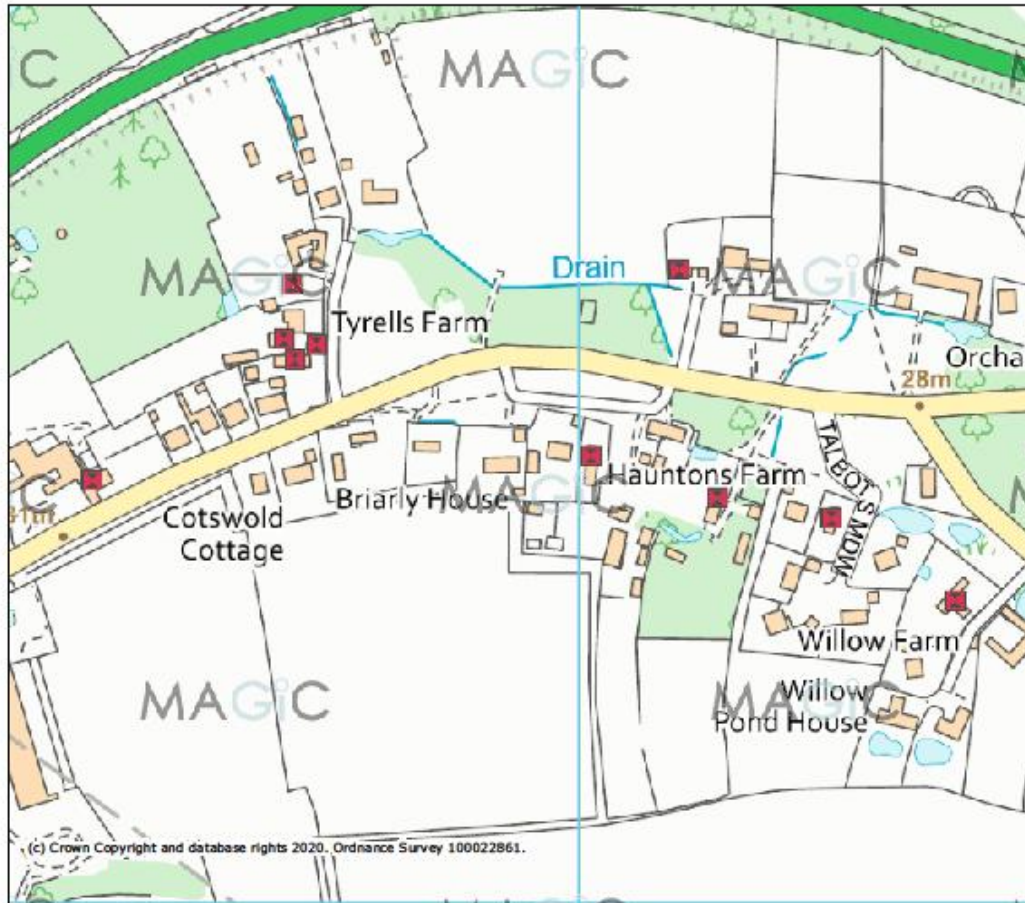


Note wet ground either side of Old Bury Road – Ponds shown on 1865 Ordnance Survey Sheet

# Further information – Listed buildings

MAGiC

Stuston Village - Local Geography



## Legend

Listed Buildings  
(England)



Projection = OSG36  
xmin = 612400  
ymin = 277900  
xmax = 613500  
ymax = 278600



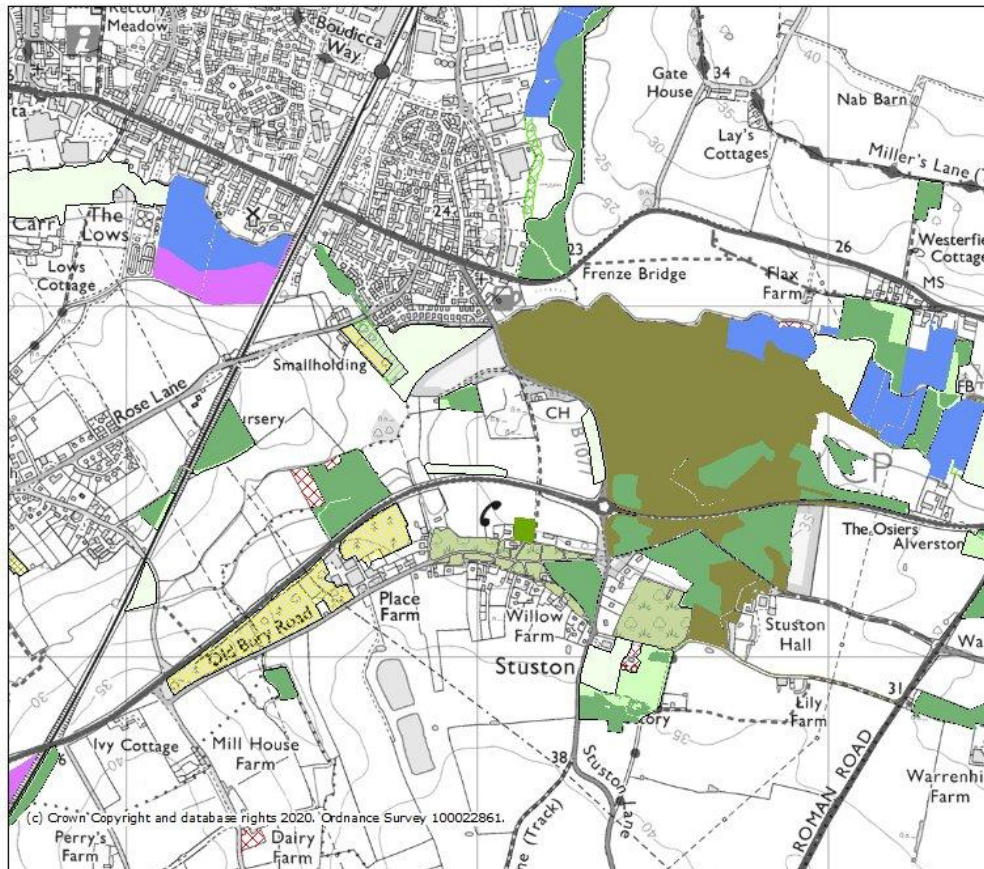
Map produced by MAGiC on 27 April, 2020.  
Copyright resides with the data suppliers and the map must not be reproduced without their permission. Some information in MAGiC is a snapshot of the information that is being maintained or continually updated by the originating organisation. Please refer to the metadata for details as information may be illustrative or representative rather than definitive at this stage.

There are 17 Grade 2 listed buildings in the village

# Further information: Small Scale plan

MAGiC

## Stuston Village - Habitats



Note: Common ground, heathland and water meadows by R. Waveney



# Further information: 1865 OS Map

Browser tabs: Email - Steve Leigh - Outlook | View: Suffolk XXV.NW (includes: Diss; Palgrave; Roydon; Wortham.) | map (1).pdf

Address bar: maps.nls.uk/view/101576675

Navigation: Home, Back, Forward, Refresh, Stop

Search: Keyword search

Commercial re-use restrictions on this map.

Order this map

Maps home > OS Six-inch England and Wales, 1842-1952

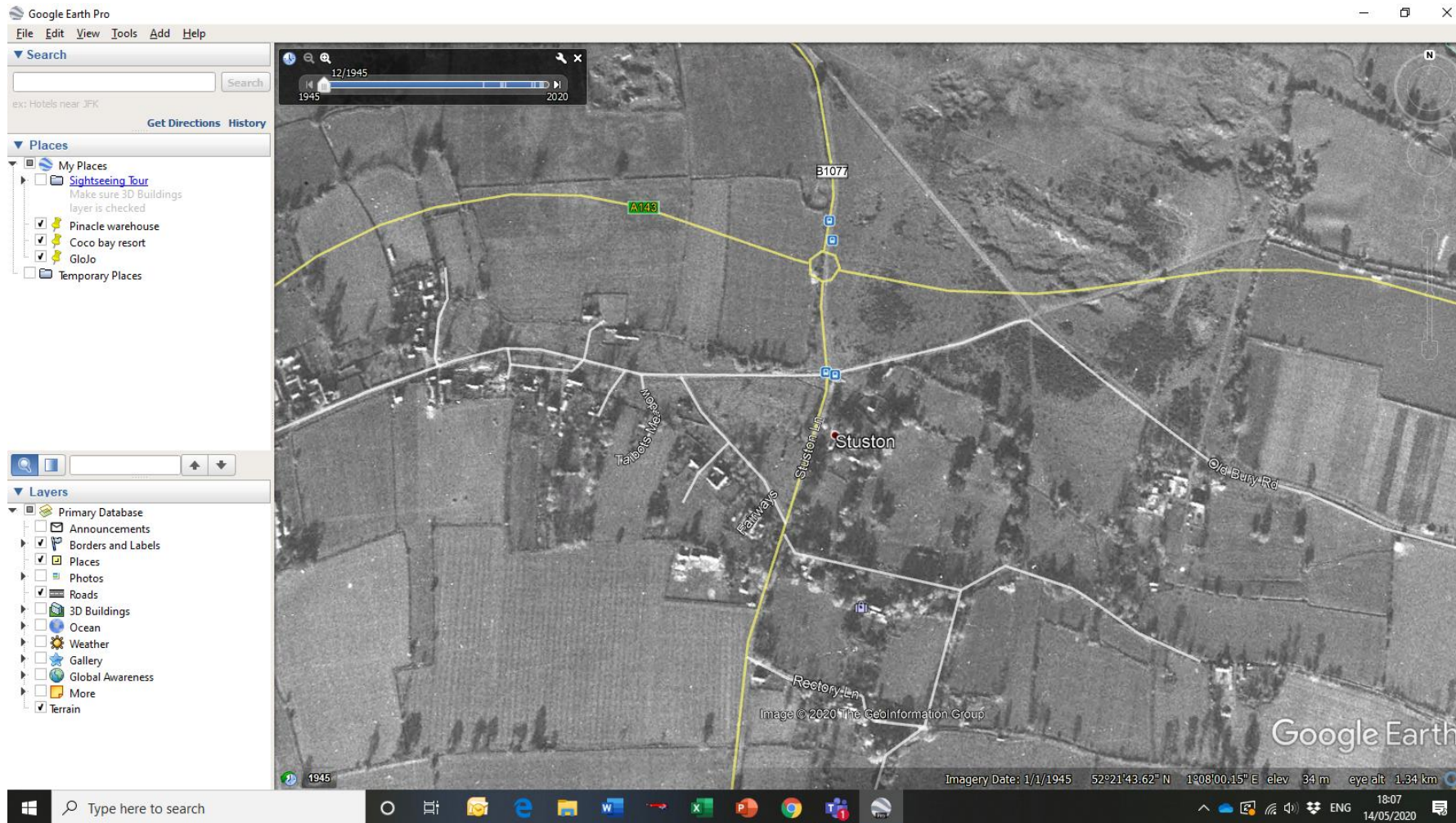
**Note:**  
Many ponds thro' village  
Possibly from last Ice Age

Map labels: Stuston Place, School, Stuston Common, Stuston, Suff. XXV. N. E. To Hoaze, 30", Guide Post, B.M. 87.3, SOOLE 2 BURY 20, B.M. 111.6, 90, 91, 93, 94, 101, 105, 108, 109, 111, 119, C.T.O.C., Aft.R.H., F.P., Urd., Aft.R.H., C.S., T.B., 102, 103, 104, 106, 107, 108, 109, 110, 111, 112, 113, 114, 115, 116, 117, 118, 119, 120, 121, 122, 123, 124, 125, 126, 127, 128, 129, 130, 131, 132, 133, 134, 135, 136, 137, 138, 139, 140, 141, 142, 143, 144, 145, 146, 147, 148, 149, 150, 151, 152, 153, 154, 155, 156, 157, 158, 159, 160, 161, 162, 163, 164, 165, 166, 167, 168, 169, 170, 171, 172, 173, 174, 175, 176, 177, 178, 179, 180, 181, 182, 183, 184, 185, 186, 187, 188, 189, 190, 191, 192, 193, 194, 195, 196, 197, 198, 199, 200, 201, 202, 203, 204, 205, 206, 207, 208, 209, 210, 211, 212, 213, 214, 215, 216, 217, 218, 219, 220, 221, 222, 223, 224, 225, 226, 227, 228, 229, 230, 231, 232, 233, 234, 235, 236, 237, 238, 239, 240, 241, 242, 243, 244, 245, 246, 247, 248, 249, 250, 251, 252, 253, 254, 255, 256, 257, 258, 259, 260, 261, 262, 263, 264, 265, 266, 267, 268, 269, 270, 271, 272, 273, 274, 275, 276, 277, 278, 279, 280, 281, 282, 283, 284, 285, 286, 287, 288, 289, 290, 291, 292, 293, 294, 295, 296, 297, 298, 299, 300, 301, 302, 303, 304, 305, 306, 307, 308, 309, 310, 311, 312, 313, 314, 315, 316, 317, 318, 319, 320, 321, 322, 323, 324, 325, 326, 327, 328, 329, 330, 331, 332, 333, 334, 335, 336, 337, 338, 339, 340, 341, 342, 343, 344, 345, 346, 347, 348, 349, 350, 351, 352, 353, 354, 355, 356, 357, 358, 359, 360, 361, 362, 363, 364, 365, 366, 367, 368, 369, 370, 371, 372, 373, 374, 375, 376, 377, 378, 379, 380, 381, 382, 383, 384, 385, 386, 387, 388, 389, 390, 391, 392, 393, 394, 395, 396, 397, 398, 399, 400, 401, 402, 403, 404, 405, 406, 407, 408, 409, 410, 411, 412, 413, 414, 415, 416, 417, 418, 419, 420, 421, 422, 423, 424, 425, 426, 427, 428, 429, 430, 431, 432, 433, 434, 435, 436, 437, 438, 439, 440, 441, 442, 443, 444, 445, 446, 447, 448, 449, 450, 451, 452, 453, 454, 455, 456, 457, 458, 459, 460, 461, 462, 463, 464, 465, 466, 467, 468, 469, 470, 471, 472, 473, 474, 475, 476, 477, 478, 479, 480, 481, 482, 483, 484, 485, 486, 487, 488, 489, 490, 491, 492, 493, 494, 495, 496, 497, 498, 499, 500, 501, 502, 503, 504, 505, 506, 507, 508, 509, 510, 511, 512, 513, 514, 515, 516, 517, 518, 519, 520, 521, 522, 523, 524, 525, 526, 527, 528, 529, 530, 531, 532, 533, 534, 535, 536, 537, 538, 539, 540, 541, 542, 543, 544, 545, 546, 547, 548, 549, 550, 551, 552, 553, 554, 555, 556, 557, 558, 559, 560, 561, 562, 563, 564, 565, 566, 567, 568, 569, 570, 571, 572, 573, 574, 575, 576, 577, 578, 579, 580, 581, 582, 583, 584, 585, 586, 587, 588, 589, 590, 591, 592, 593, 594, 595, 596, 597, 598, 599, 600, 601, 602, 603, 604, 605, 606, 607, 608, 609, 610, 611, 612, 613, 614, 615, 616, 617, 618, 619, 620, 621, 622, 623, 624, 625, 626, 627, 628, 629, 630, 631, 632, 633, 634, 635, 636, 637, 638, 639, 640, 641, 642, 643, 644, 645, 646, 647, 648, 649, 650, 651, 652, 653, 654, 655, 656, 657, 658, 659, 660, 661, 662, 663, 664, 665, 666, 667, 668, 669, 670, 671, 672, 673, 674, 675, 676, 677, 678, 679, 680, 681, 682, 683, 684, 685, 686, 687, 688, 689, 690, 691, 692, 693, 694, 695, 696, 697, 698, 699, 700, 701, 702, 703, 704, 705, 706, 707, 708, 709, 710, 711, 712, 713, 714, 715, 716, 717, 718, 719, 720, 721, 722, 723, 724, 725, 726, 727, 728, 729, 730, 731, 732, 733, 734, 735, 736, 737, 738, 739, 740, 741, 742, 743, 744, 745, 746, 747, 748, 749, 750, 751, 752, 753, 754, 755, 756, 757, 758, 759, 760, 761, 762, 763, 764, 765, 766, 767, 768, 769, 770, 771, 772, 773, 774, 775, 776, 777, 778, 779, 780, 781, 782, 783, 784, 785, 786, 787, 788, 789, 790, 791, 792, 793, 794, 795, 796, 797, 798, 799, 800, 801, 802, 803, 804, 805, 806, 807, 808, 809, 810, 811, 812, 813, 814, 815, 816, 817, 818, 819, 820, 821, 822, 823, 824, 825, 826, 827, 828, 829, 830, 831, 832, 833, 834, 835, 836, 837, 838, 839, 840, 841, 842, 843, 844, 845, 846, 847, 848, 849, 850, 851, 852, 853, 854, 855, 856, 857, 858, 859, 860, 861, 862, 863, 864, 865, 866, 867, 868, 869, 870, 871, 872, 873, 874, 875, 876, 877, 878, 879, 880, 881, 882, 883, 884, 885, 886, 887, 888, 889, 890, 891, 892, 893, 894, 895, 896, 897, 898, 899, 900, 901, 902, 903, 904, 905, 906, 907, 908, 909, 910, 911, 912, 913, 914, 915, 916, 917, 918, 919, 920, 921, 922, 923, 924, 925, 926, 927, 928, 929, 930, 931, 932, 933, 934, 935, 936, 937, 938, 939, 940, 941, 942, 943, 944, 945, 946, 947, 948, 949, 950, 951, 952, 953, 954, 955, 956, 957, 958, 959, 960, 961, 962, 963, 964, 965, 966, 967, 968, 969, 970, 971, 972, 973, 974, 975, 976, 977, 978, 979, 980, 981, 982, 983, 984, 985, 986, 987, 988, 989, 990, 991, 992, 993, 994, 995, 996, 997, 998, 999, 1000

Map navigation: Help, Print PDF, Link to this view, Show map location, New: Zoom in and hold [Alt] and click to view georeferenced location, Share, Copyright, Site map, Contact, About

Windows taskbar: Type here to search, 08:12 22/05/2020

# Further information: 1945 Aerial image



New roads superimposed  
in yellow

# Image 1a Entering village on B1077

National Grid reference TM 1325 7791



Planning History	None
Scenic Quality	Rural
Conservation Interest	Natural open space
Recreational Value	None
Rarity	Not really

# Image 1b Rectory Lane

National Grid reference TM 1325 7791



Access to properties and to church

Planning History

Scenic Quality

Conservation Interest

Recreational Value

Rarity

Defined public footpath

Rural

Natural open space

Walking and cycling

Exclusive to Stuston

# Image 2 All Saints Church and graveyard

National Grid reference TM 1377 5382

Church with (original) round tower,  
Founded in 12<sup>th</sup> Century

Planning History	None
Scenic Quality	Rural
Conservation Interest	Historic Church Grade 11* listed
Recreational Value	Place of worship
Rarity	Exclusive to Stuston



# Image 3 Church Lane footpath

National Grid reference TM 1378 5701



Planning History

Scenic Quality

Conservation Interest

Recreational Value

Rarity

Defined Public Footpath

Rural

Natural open space

Walking and occasional cycling

Exclusive to Stuston



# Image 4 – Old Bury Road – looking West

National Grid reference TM 1378 7924



Open common ground on South side  
Untouched natural habitat on North side

Planning History	Part of Stuston Common
Scenic Quality	Rural
Conservation Interest	Heathland
Recreational Value	Walking, cycling, birdwatching
Rarity	Exclusive to Stuston



# Image 5 – Heathland adjacent Old Bury Road

National Grid reference TM 1378 6035



Planning History

Part of Stuston Common

Scenic Quality

Heathland

Conservation Interest

Natural open space

Recreational Value

Walking, cycling, birdwatching

Rarity

Exclusive to Stuston

Profusion of gorse, birch, hawthorn, etc.

Excellent walking on metalled roads

# Image 6 – Old Bury Road – School Lane

National Grid reference TM 1378 2127



Planning History	Part of Stuston Common
Scenic Quality	Rural
Conservation Interest	Natural open space: Many ponds shown on 1865 OS Maps, identified as probably being created in last Ice Age!
Recreational Value	Walking and Cycling
Rarity	Exclusive to Stuston

# Image 7a Village centre looking East

National Grid reference TM 1278 7928



Planning History	None
Scenic Quality	Rural
Conservation Interest	Natural open space
Recreational Value	Walking and cycling
Rarity	Exclusive to Stuston



Village post box, pump and telephone box – now a library.  
[the village post code IP21 4AB is centred here]

Footpath along Old Bury Road across front of properties on right

Lowest point in village, many ponds in vicinity shown on 1865 OS Maps,  
identified as probably being created in last Ice Age! ("Pingos")

# Image 7b – Village Green and Coronation Oak

Opposite image 7a

National Grid reference TM 1278 9728



Planning History  
Scenic Quality  
Conservation Interest  
Recreational Value  
Rarity

Part of Stuston Common  
Rural  
Natural open space  
Village Green (events)  
Exclusive to village

# Image 8 Western Village Boundary to East

National Grid reference TM 1278 4104



Planning History	None
Scenic Quality	Rural
Conservation Interest	Natural open space
Recreational Value	Walking and cycling
Rarity	Not really

Continued route of Old Bury Road

# Image 9 – Common and golf course from B1077

National Grid reference TM 1378 3470



Planning History	Part of Stuston Common
Scenic Quality	Rural
Conservation Interest	Natural open space
Recreational Value	Golf Course and walking
Rarity	Not really

Open common land laid out as golf course.  
River Waveney on left hand side to centre  
of image.

Water meadows in far distance centre image.